



Product Service

CERTIFICATE

No. Z1B 17 06 70852 015

Holder of Certificate: Indoorcycling Group GmbH

Happurger Straße 84-88

90482 Nürnberg

GERMANY



Certification Mark:



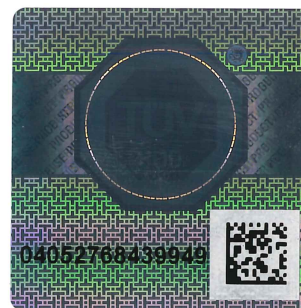
Product:

**Stationary training equipment
Exercise bicycle with a fixed wheel**

The product was tested on a voluntary basis and complies with the essential requirements. The certification mark shown above can be affixed on the product. It is not permitted to alter the certification mark in any way. In addition the certification holder must not transfer the certificate to third parties. See also notes overleaf.

Test report no.: 028-713081440/2

Valid until: 2022-06-25



Date, 2017-07-04

(Roland Zwickl)

Page 1 of 3



Product Service

CERTIFICATE**No. Z1B 17 06 70852 015****Model(s):**

LifeFitness IC5 B2
powered by ICG, No. IC-LFIC5B2
Cybex IC5 B2
powered by ICGA, No. IC-CYIC5B2
LifeFitness IC6 B1
powered by ICG, No. IC-LFIC6B1
Cybex IC6 B1
powered by ICG, No. IC-CYIC6B1
Class: S

Parameters:

Bike with Belt drive and fixed wheel
 Steel frame with magnetic resistance system and emergency stop, brake positioning sensor, Power output calculation.
 Rear & Front stabilizer with additional protection covers and rubber leveling feet

Overall dimension: approx. 1320 mm x 1200 mm x 520 mm
 (l x h x w)

Maximum user weight: 150 kg

Total Weight: 54kg

Adjustment range

Seat: max. Height 1150 mm Vertical 0 ~ 22 STOP;

orizental: -10 ~ +10

Handlebar: max. Height 1200mm, Vertical 0 ~ 14 STOP;

horizontal: -2 ~ +8

Assembly:	Dimensions:	Material:
Frame	1050 x 750 x 150 mm	regular steel
Flywheel	396Ø x 10,5 mm	Alloy, 4 kg
Crank length	172,5 mm	Steel
Crank Ddameter stroke	345 mm	
Brake System	200 x 50 x 40 mm	Plastic
Handlebar	880 x 630 x 530 mm	Steel & PVC
Seat	830 x 380 x 170 mm	PU foam, PVC cover
Stabilizer	520 x 180 x 90 mm	Steel & Plastic
Pedals	90 x 80 x 25 mm	Alloy Body, steel axle

Tested according to:

EN ISO 20957-1:2013
 EN 957-10:2005
 EN 60335-1:2012/A11:2014

Production Facility(ies):

71628

Page 2 of 3



Product Service

Annex to TÜV SÜD Mark Certificate No. Z1B 17 06 70852 015

LifeFitness IC5 B2 / Cybex IC5 B2 LifeFitness IC6 B1 /Cybex IC6 B1

Training computer IC5:

Computer with an LCD dot matrix display which is operated with 2 D-cell batteries and also has a Ble and Ant + communication interface.

Shown information: speed, distance, cadence, calories, time, heart rate (HR), Calories per Hour, percentage (%) of HR max., Watt's, FTP

Training computer IC6:

Computer with a full-color TFT display and a Ble and Ant + Communication interface. Autonomous power supply (generator, lipo battery, control board and brake positioning sensor).

Shown information: speed, distance, cadence, calories, time, heart rate (HR), Calories per Hour, percentage (%) of HR max., Watt's, FTP

Department: GARTCP / FS
Date: 2017-07-04

Page 3 of 3