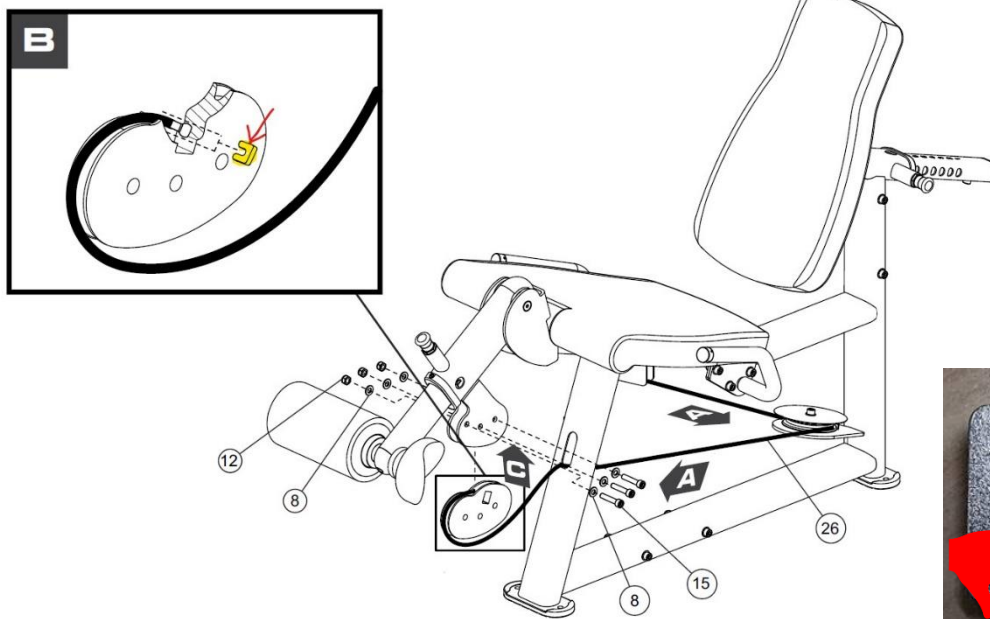


Subject:	IA20201006a – LF Optima Strength - incorrect Cable Retainer				
Product Brand: Life Fitness	Product Market Segment: <input checked="" type="checkbox"/> Commercial <input type="checkbox"/> Consumer		Organizational Distribution: <input checked="" type="checkbox"/> LF Subs <input checked="" type="checkbox"/> ISO's/IIO's <input checked="" type="checkbox"/> Distributors <input checked="" type="checkbox"/> Dealers <input type="checkbox"/> Customers		
Time Required:	<input type="checkbox"/> No Time <input checked="" type="checkbox"/> 5 Min <input type="checkbox"/> 10 Min <input type="checkbox"/> 15 Min <input type="checkbox"/> 30 Min <input type="checkbox"/> 45 Min <input type="checkbox"/> 1hr <input type="checkbox"/> 1,5hr <input type="checkbox"/> 2hr <input type="checkbox"/> 2hr+				
Problem Code:	-	Internal Reference:	QHOLD-15	Affected region:	Global
Doc. Number: IA20201006	Doc. Revision: a	Doc. Revision Date: 2020-10-06	Pages: 3	Author: Fran Keijmes	Departmental Distribution: <input checked="" type="checkbox"/> Installation <input checked="" type="checkbox"/> Service <input type="checkbox"/> Sales
<small>Life Fitness proprietary and confidential information. For the use of the intended recipient only. The information and instructions in this alert are intended for use by skilled and certified Life Fitness installers & technicians only. Contact the local Life Fitness representative for more information. Doc revision update edits are highlighted in green © 2020 Life Fitness, Inc. All rights reserved.</small>					

DESCRIPTION

For a small range of Optima Strength products, it's possible that the wrong version Cable Retainer was included within the box. When this is the case, this means that the assembly of the product can't be finalized. The correct part is needed to be able to finalize the product assembly.

This Cable Retainer is located inside the Cam on the working arm and holds the end of the cable into place.



SCOPE

Affected Products:

- OSBC – Optima Bicep Curl
- OSLC – Optima Leg Curl
- OSLE – Optima Leg Extension
- OSLEC – Optima Leg Extension /Leg Curl
- OSTE – Optima Tricep Extension

Affected Serial numbers:

Serial Numbers starting with 102031...until 102039...
(This equals units produced in Week 31, 2020 until Week 39, 2020)

The Cable Retainer is only included in the "Frame box" (SKU: OSxx-01xx-103) with the white colored box label, not the "OSTWR" boxes with green colored labels. This means only White labeled "Frame Box" Serial Numbers are affected.



Production location:

Life Fitness manufacturing facility in Hungary (Serial Number label indicates "Made in Hungary")

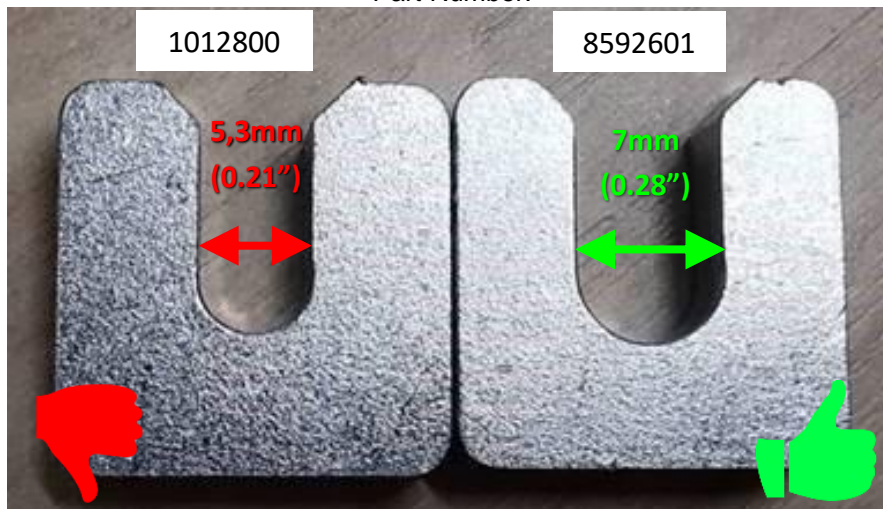
Note: As it's unclear if all affected units include the incorrect Cable retainer, it's possible that affected products have been delivered with the correct Cable Retainer.

SOLUTION

General solution

Measure the width of the inner cut out of the Cable Retainer. The correct width is 7mm (≈0.28 Inch). If the cut out is around 5,3mm (≈0.21 Inch) then the Cable Retainer is incorrect, which then needs to be replaced by the correct one (Part Number 8592601). The incorrect Cable Retainer can be disposed.

Part Number:



1. Solving the issue prior to Installation (at warehouses)



Before the installation takes place, open the box and find the Blister Pack containing the Cable Retainer. Measure the width of the cut-out of the Cable Retainer, as described above.

If the incorrect Cable Retainer was added to the Blister Pack, remove it from the Blister Pack and dispose it. Add the correct Cable Retainer to the Blister Pack with (preferably) transparent adhesive tape. Make sure the Cable Retainer will not fall out of the Blister Pack. Put the Blister Pack back into the box and close the box.

If the correct Cable Retainer was added to the Blister Pack, put the Blister Pack back into the box and close the box.

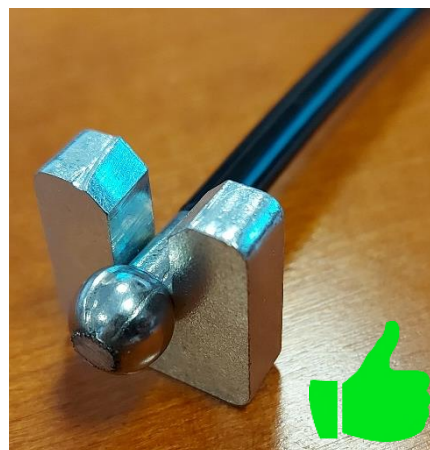
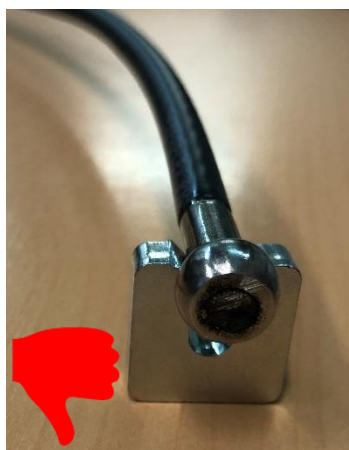
2. Solving the issue at installation

Before assembling the product, open the box and find the Blister Pack containing the Cable Retainer. Measure the width of the cut-out of the Cable Retainer, as described above.

If the incorrect Cable Retainer was added to the Blister Pack, remove it from the Blister Pack and dispose it. Use the correct Cable Retainer during the assembly procedure.

If the correct Cable Retainer was added to the Blister Pack, assemble the product as normal.

Double check that the Cable can slide fully and freely to the center of the Cable Retainer cut out.



3. Solving the issue after installation

In theory it's possible to install the incorrect Cable Retainer in the Cam. Open the Cam and double check that the correct Cable Retainer was installed, as described above. Also make sure that the Cable can slide fully and freely to the center of the Cable Retainer cut out.